

READ DISCLAIMER & INSTRUCTION COMPLETELY THEN INSTALL.

Installation Instructions: BanDiT 4x4 Idler Arm Bushings

Date Created: 2008 May 20 Edit Date: 2008 June 05

Version: v4.0

Application(s): Nissan Factory Steering System and some Aftermarket Steering Systems

Vehicle(s): Nissan 00- 04 Xterra, 00 – 04 Frontier, 89 – 94 Hard-body
Pathfinder

Contents:

- (1) Upper Idler Arm Bushing (Black Zip-Tie)
- (1) Lower Idler Arm Bushing

Tools needed:

- GLOVES. Safety Glasses
- Ratchet wrench, ½ drive
- 17 mm socket, ½ drive
- 19 mm socket, ½ drive
- 6" extension, ½" drive
- Pliers
- Car Jack
- 3 + ton Car/SUV jack stands
- Torque wrench, ½ drive
- No. 8 Allen wrench
- 3/4 " box wrench
- 19 mm box wrench
- Drift Pin
- Hammer
- Press (Preferred but not required)
- Grease Gun
- Bench Vise
- Dead-blow Hammer

Fluids:

- Grease – NOTE: If using non-serviceable Idler Arm Use Teflon based grease
 - Recommended [Permatex 81944 Ultra Slick Multipurpose Synthetic](#) Lubricant with PTFE
- Brake Cleaner

Steps:

1. Park the vehicle on a level and solid surface
2. Steer the vehicle to the ½ way left allow easier access to the steering components
3. Make sure the engine is off and the parking brake is engaged
 - a. Manual Transmissions: Place the Stick Shifter in 1st gear
 - b. Automatic Transmission: Place the Shifter in Park [P]
4. Tire Removal: Removing the Front Passenger Side Tire is not necessary but may make the work area easier to access.
 - a. If you decide to remove the Passenger front tire and wheel. Secure the Vehicle with the proper rated jack stand and block/chuck a tire.
5. Center Link: Disconnect the Idler arm from the Center Link.
(SAVE HARDWARE)
6. Idler Arm Brace/ Idler Shaft Nut
(NOTE POSITION OF HARDWARE & SAVE):
 - a. Remove Idler Shaft Nut
 - b. Aftermarket Steering Systems Disconnect the Idler arm brace from the frame and the Idler shaft (SAVE HARDWARE)
 - c. If other Idler arm Brace installed; disconnect the Idler shaft nut

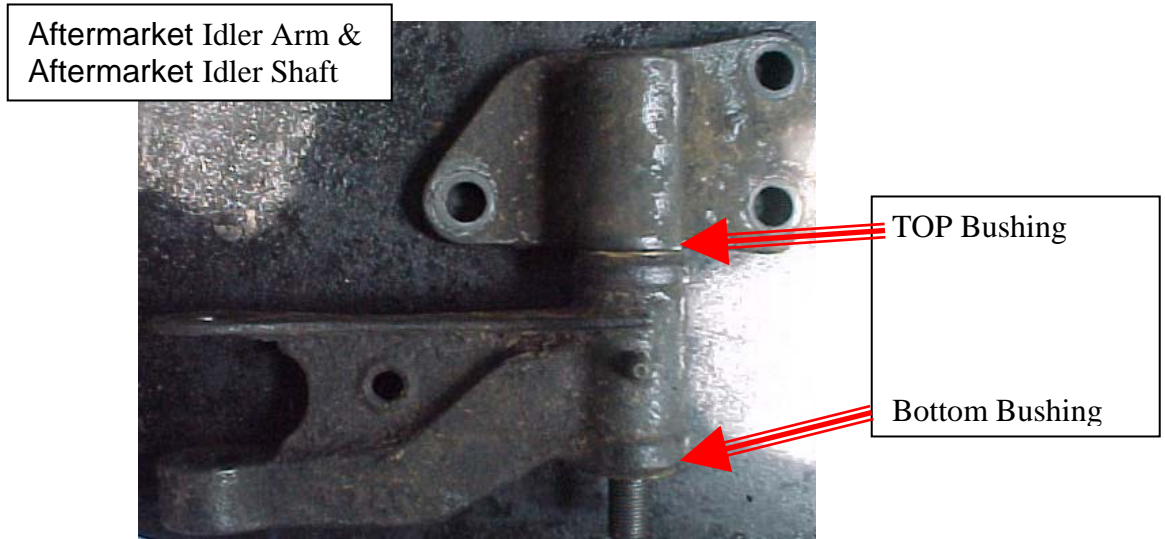


Aftermarket Idler Arm and Idler Shaft with
Modified Aftermarket Idler Arm Brace

7. Idler arm

(NOTE POSITION OF HARDWARE & SAVE)

- a. Disconnect the three (3) Idler Arm nuts & remove idler arm assembly:



8. Old bushings:

- a. Protect the Finish of the Arm rags or small pieces of wood. Place the idler arm into a vice. You may want to clean the arm with break cleaner to remove old grease and dirt build-up.
- b. To remove the old bushings use a drift pin and hammer.
- c. Insert Drift pin and locate the bushing edge
- d. Alternate hitting the sides of bushing's inner edge to break it free. You may need to turn the arm and repeat for the 2nd bushing.



9. Clean out the Idler arm off all grease or foreign objects.

Recommend Brake Cleaner



10. Installing the Bushings.

NOTE: To ensure Maximum Performance and Life of bushings be sure to install them in the correct configuration. The top bushing has a modified chamfer edge **(Bushing with a black tie-wrap)** to allow for proper seating against the Idler Shaft. Return or Refunds will not be offered for improperly install parts. Damage will be immediately evident

NOTE: Ensure that the upper and lower bushings are installed correctly the first time. Removing them may damage them and case pre-mature wear with poor steering response.

- a. **Recommended Procedure**
Use a Shop Style Hydraulic Press or Arbor Style Press
- i. Remove the Black zip tie from the Top Idler Arm bushing.
 - ii. Grease the Top bushing and place in top position.
 - iii. Press into Top position
 - iv. Flip Idler arm.
 - v. Grease the Bottom bushing and place in Bottom position
 - vi. Press into Bottom of Idler Arm



- b. **Alternate Procedure:** Hammer and Vise (Recommend **dead-blow hammer**)
 - i. Place the Idler Arm level and securely in a vise, or other fixture.
 - ii. Remove the Black zip tie from the Top Idler Arm bushing.
 - iii. Grease the outside of top bushing and place in top position.
 - iv. Using a Dead Blow hammer or Protect the bushing with a small block of wood to prevent metal-to-metal contact with the hammer. Slowly hammer the bushing into the arm.
 - v. Flip Idler arm and repeat.

11. Install onto Vehicle:

- a. Grease the inside of the Idler arm and bushings.
- b. Install the Idler arm and the Idler Shaft on to the vehicle
- c. Aftermarket: Tighten the Idler arm shaft nut then tighten the Idler brace to frame.
- d. Aftermarket Idler Arm Brace: Torque Idler arm Shaft bottom nut First then torque the Idler shaft to frame.
- e. Reconnect the Center link
- f. Torque all connections to proper levels.

TORQUE VALUES

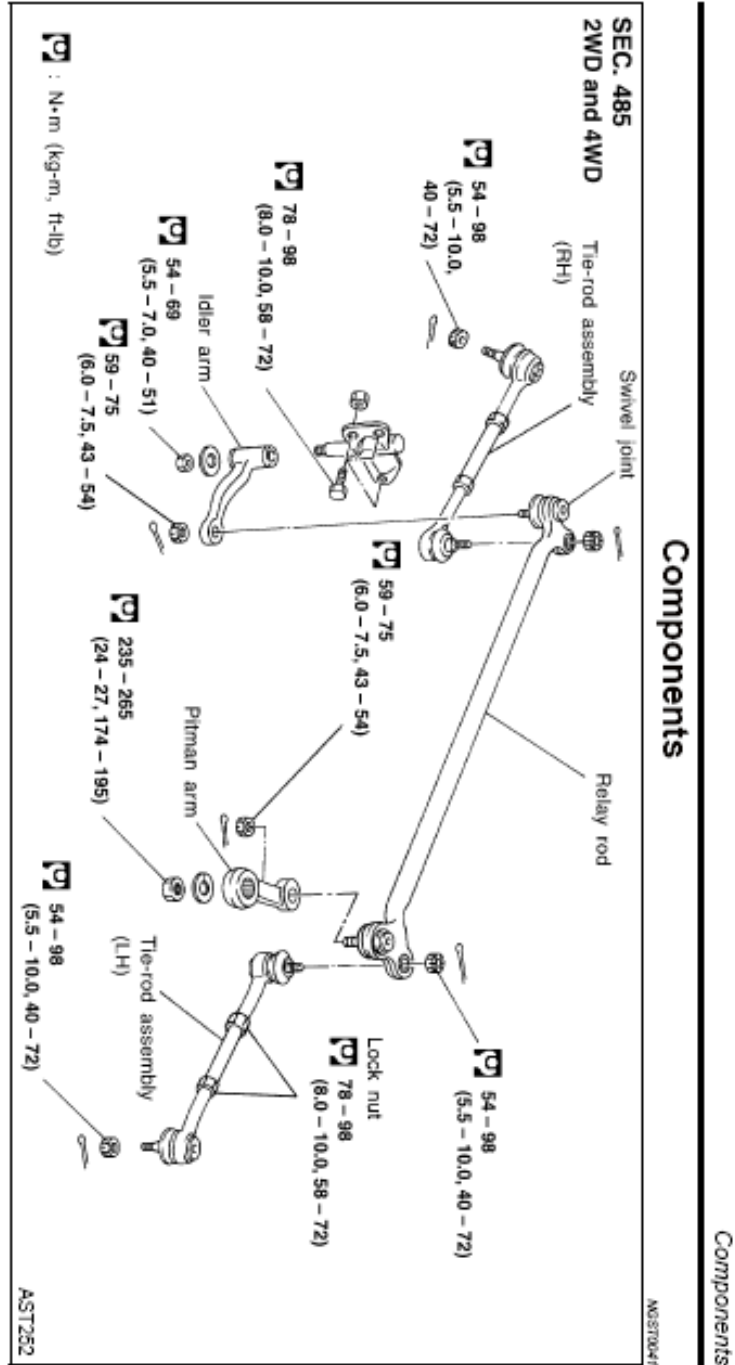
- g. Grease serviceable bushings.

SECURE ALL CONNECTIONS AND TO INSTALL ALL COTTER PINS, REPLACE IF NESSECARY

12. ENJOY

13. Recheck torques after 100 miles of driving or one off-road trip.

Torque Values from NISSAN Electronic Tech Manuals:



BANDIT 4X4 USER DISCLAIMER:

Buyer, his/her heirs, assigns, legal representatives and attorneys, knowingly and voluntarily release any and all claims, demands, or causes of action, known or unknown, which he/she may have against the seller, his/her successors, assigns, representatives and lessees arising from any injury or illness, including death or disability, incurred in connections with the installation and use of this product. No warranty is expressed nor implied. Buyer assumes all responsibility for the installation and maintenance of this product. Improper installation, improper maintenance, or deliberate misuse shall also release seller, his/her successors, assigns, representatives and lessees from any and all claims, demands, or causes of action, known or unknown arising from any injury or illness, including death or disability, incurred in connections with the installation and use of this product.

- 1) Improper installation includes, but is not limited to:
 - a) Failure on the part of the buyer to properly install all of the supplied parts and components in accordance with the supplied instructions,
 - b) Failure to install ALL of the supplied parts and components in accordance with the supplied instructions.
 - c) Modification of ANY parts or components.

- 2) Improper maintenance includes, but is not limited to:
 - a) Failure to periodically inspect installed parts and components for tightness, wear and/or damage.
 - b) Failure to periodically inspect and lubricate installed parts and components in accordance with the supplied instructions.
 - c) Modification of ANY parts or components.

- 3) Misuse includes, but is not limited to:
 - a) Using the installed item for purposes other than which it is intended.
 - b) Modification of ANY parts or components. Several BanDiT 4X4 products offered do not come with instructions or complete hardware such as bolts, nuts, axles, etc...

Additional fabrication, finishing, painting, or products may be required for installation. The following is the BANDIT 4X4 DISCLAIMER for all BanDiT 4X4 products and services provided. All BanDiT 4X4 product or BanDiT 4X4 service shall be covered by the terms of this agreement. The use of any BanDiT 4X4 product or BanDiT 4X4 service demonstrates that you have read and fully accept the terms of this agreement. If the owner of any BanDiT 4X4 product is unwilling to accept the responsibility and terms of this liability form, the product shall be immediately removed from the vehicle.

All BanDiT 4X4 labor and services are performed after an agreement with the vehicle's owner and the owner must accept the responsibility and terms of this liability form. The owner of any BanDiT 4X4 product or vehicle on which labor was performed which is sold, traded, or gifted must notify the new owner of these conditions and terms.

BANDIT 4X4 after market suspension products and vehicle accessories modify a vehicle for uses which exceed conditions anticipated by the vehicle manufacturer. BanDiT 4X4 products are not designed to meet vehicular code, federal law, state law, or any other vehicle requirement. Owners accept all responsibility for verifying the use of BanDiT 4X4 products in their state prior to installation and use. BanDiT 4X4 products have been designed for the high performance demands of off-road driving, four wheeling, and rock crawling.

BANDIT 4X4 is not liable nor held responsible for any damages, injury's or death that can occur from on and off-road use, the result of failure of our product's, vehicular accidents, roll-overs, installation error, or lack of maintenance. Customer/driver assumes all liability for using a BanDiT 4X4 product and in assuring that the suspension system or product accessory is properly installed, maintained, and operating in safe conditions. The use of BanDiT 4X4 products vary in the degree of extremity and can not be controlled by the vehicle or product manufacturer. If the components within the suspension system or accessories become worn due to frequent and/or extreme off-road use, the safety and reliability of the vehicle and others is at risk. The maintenance of after market equipment to ensure the vehicle occupants safety is entirely your responsibility. Do not purchase BANDIT 4X4 manufactured products or components unless you are willing to accept this responsibility.

Do not install any BANDIT 4X4 products or accessories unless you feel competent at installing the product without causing present or future injury to yourself or other vehicle occupants.